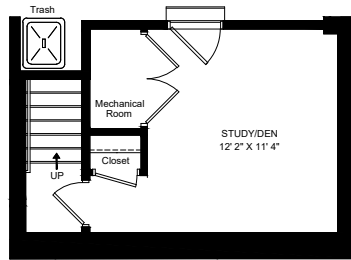


the parklane 1

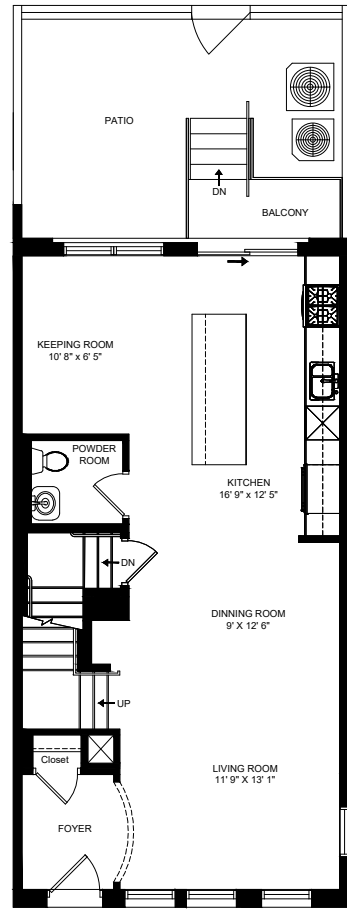
3 BED | 3.5 BATH | LOFT | DEN
 PATIO + ROOFTOP TERRACE

2,434 SQ. FT.

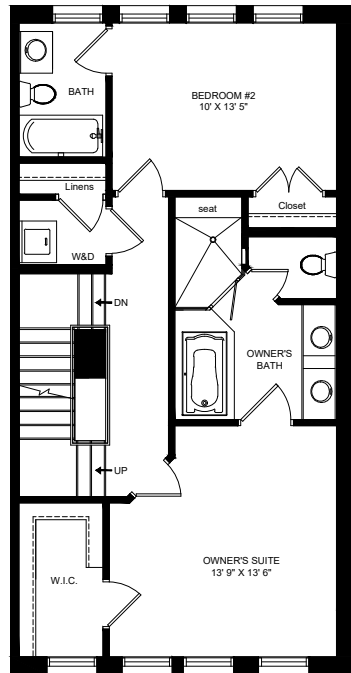
SEE GARAGE
 PLAN FOR PARKING



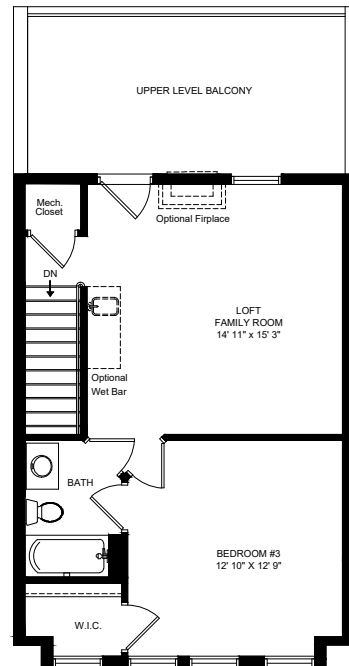
LOWER LEVEL



FIRST FLOOR



SECOND LEVEL



THIRD FLOOR



10340 Main Street • Fairfax, Virginia 22030 • (703) 570-6037 • sales@mayfaironmain.com

mayfairhomesva.com



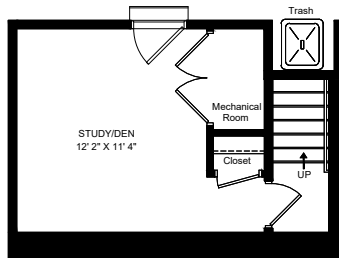
Disclaimer: While the information covered here and in the accompanying package is believed to be correct, it is issued for the purchaser's guidance only and does not form any part of any legal contract or purchase agreement. For Complete details, please refer to the CICB Approved Public Offering Statement provided to you as a legal requirement of your purchase, including your right to rescission therein provided. Our policy is one of continued updating and improvement and the right is reserved to change included features or general specification without notice. Please see the Community Sales Manager for Details.

the parklane 2

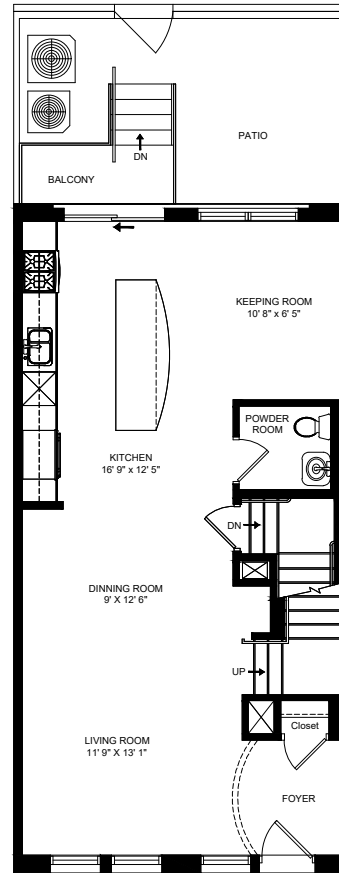
3 BED | 3.5 BATH | LOFT | DEN
 PATIO + ROOFTOP TERRACE

2,434 SQ. FT.

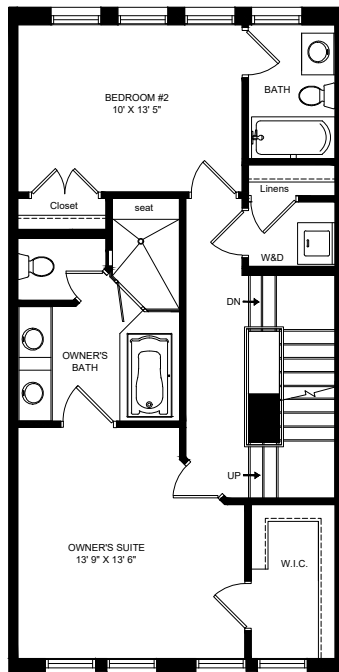
SEE GARAGE
 PLAN FOR PARKING



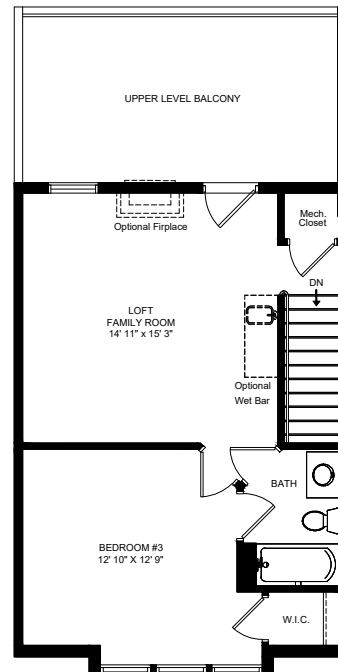
LOWER LEVEL



FIRST FLOOR



SECOND LEVEL



THIRD FLOOR



10340 Main Street • Fairfax, Virginia 22030 • (703) 570-6037 • sales@mayfaironmain.com

mayfairhomesva.com



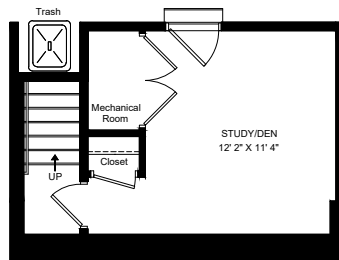
Disclaimer: While the information covered here and in the accompanying package is believed to be correct, it is issued for the purchaser's guidance only and does not form any part of any legal contract or purchase agreement. For Complete details, please refer to the CIB Approved Public Offering Statement provided to you as a legal requirement of your purchase, including your right to rescission therein provided. Our policy is one of continued updating and improvement and the right is reserved to change included features or general specification without notice. Please see the Community Sales Manager for Details.

the parklane 3

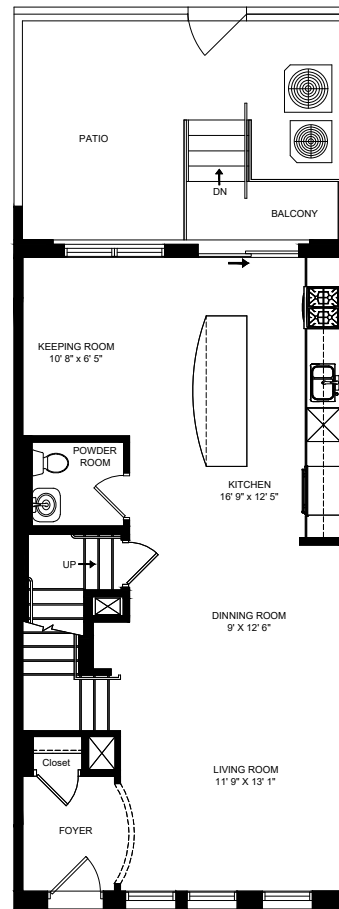
3 BED | 3.5 BATH | LOFT | DEN
 PATIO + ROOFTOP TERRACE

2,434 SQ. FT.

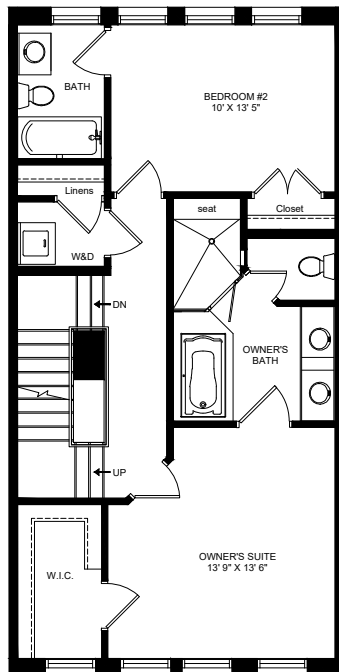
SEE GARAGE
 PLAN FOR PARKING



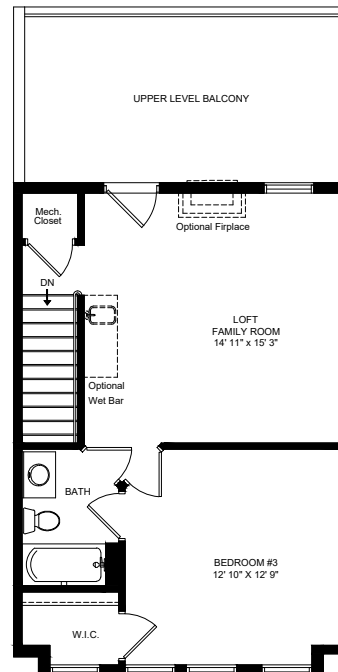
LOWER LEVEL



FIRST FLOOR



SECOND LEVEL



THIRD FLOOR



10340 Main Street • Fairfax, Virginia 22030 • (703) 570-6037 • sales@mayfaironmain.com

mayfairhomesva.com



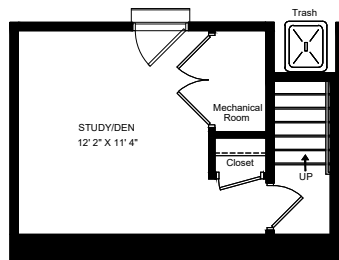
Disclaimer: While the information covered here and in the accompanying package is believed to be correct, it is issued for the purchaser's guidance only and does not form any part of any legal contract or purchase agreement. For Complete details, please refer to the CIGB Approved Public Offering Statement provided to you as a legal requirement of your purchase, including your right to rescission therein provided. Our policy is one of continued updating and improvement and the right is reserved to change included features or general specification without notice. Please see the Community Sales Manager for Details.

the parklane 4

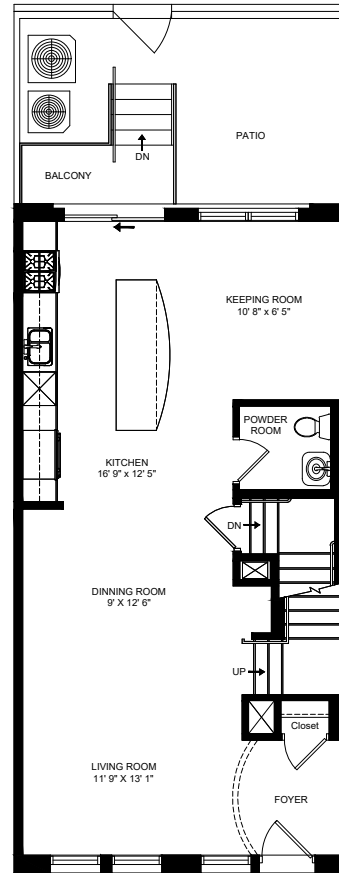
3 BED | 3.5 BATH | LOFT | DEN
PATIO + ROOFTOP TERRACE

2,434 SQ. FT.

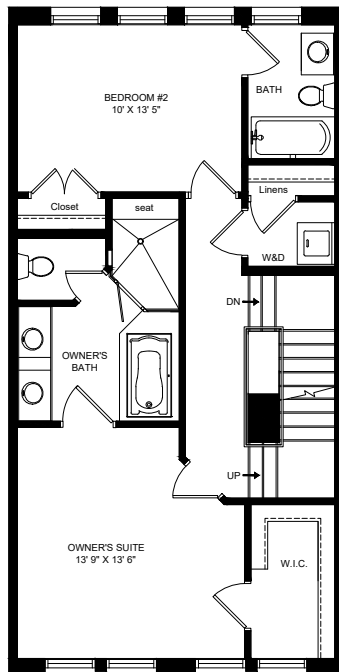
SEE GARAGE
PLAN FOR PARKING



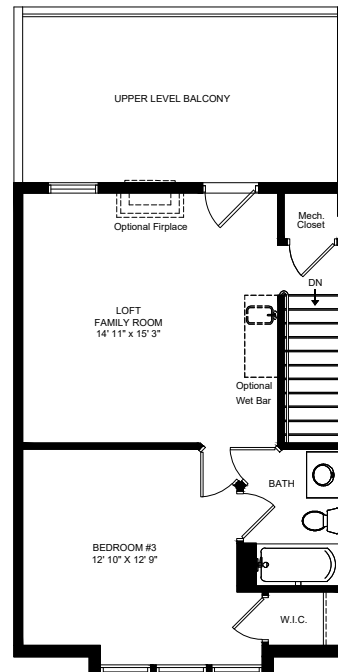
LOWER LEVEL



FIRST FLOOR



SECOND LEVEL



THIRD FLOOR



10340 Main Street • Fairfax, Virginia 22030 • (703) 570-6037 • sales@mayfaironmain.com

mayfairhomesva.com



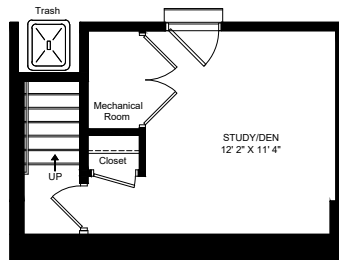
Disclaimer: While the information covered here and in the accompanying package is believed to be correct, it is issued for the purchaser's guidance only and does not form any part of any legal contract or purchase agreement. For Complete details, please refer to the CIGB Approved Public Offering Statement provided to you as a legal requirement of your purchase, including your right to rescission therein provided. Our policy is one of continued updating and improvement and the right is reserved to change included features or general specification without notice. Please see the Community Sales Manager for Details.

the parklane 5

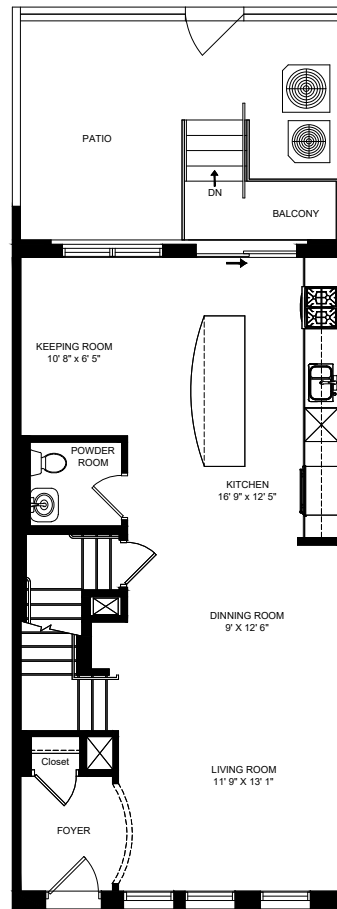
3 BED | 3.5 BATH | LOFT | DEN
 PATIO + ROOFTOP TERRACE

2,434 SQ. FT.

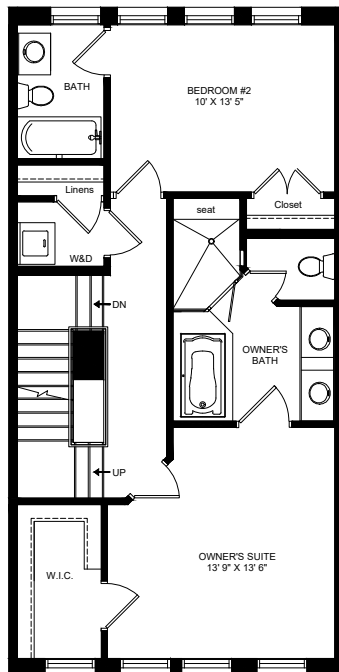
SEE GARAGE
 PLAN FOR PARKING



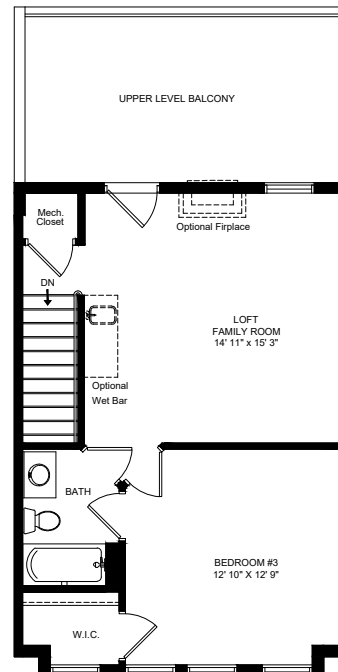
LOWER LEVEL



FIRST FLOOR



SECOND LEVEL



THIRD FLOOR



10340 Main Street • Fairfax, Virginia 22030 • (703) 570-6037 • sales@mayfaironmain.com

mayfairhomesva.com



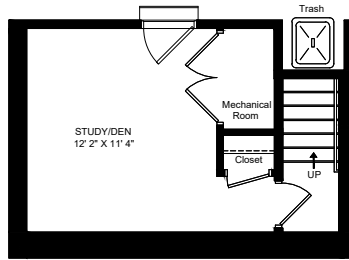
Disclaimer: While the information covered here and in the accompanying package is believed to be correct, it is issued for the purchaser's guidance only and does not form any part of any legal contract or purchase agreement. For complete details, please refer to the CICB Approved Public Offering Statement provided to you as a legal requirement of your purchase, including your right to rescission therein provided. Our policy is one of continued updating and improvement and the right is reserved to change included features or general specification without notice. Please see the Community Sales Manager for Details.

the parklane 6

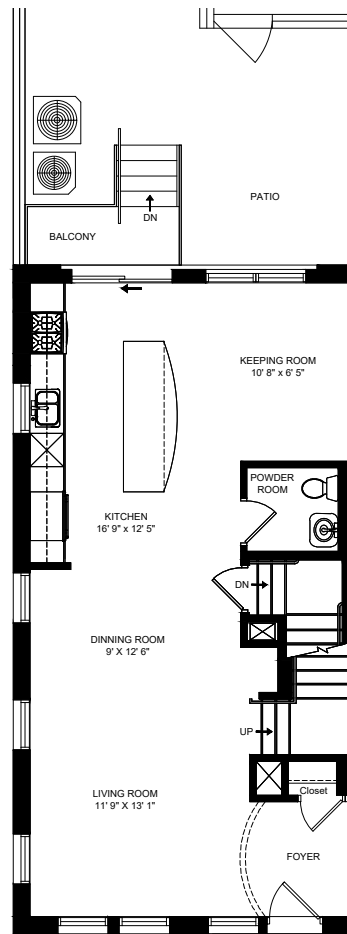
3 BED | 3.5 BATH | LOFT | DEN
PATIO + ROOFTOP TERRACE

2,434 SQ. FT.

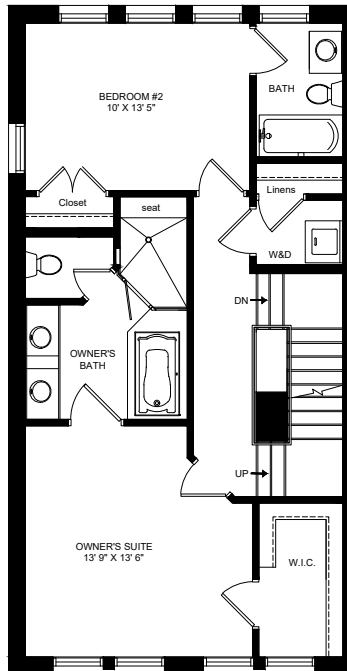
SEE GARAGE
PLAN FOR PARKING



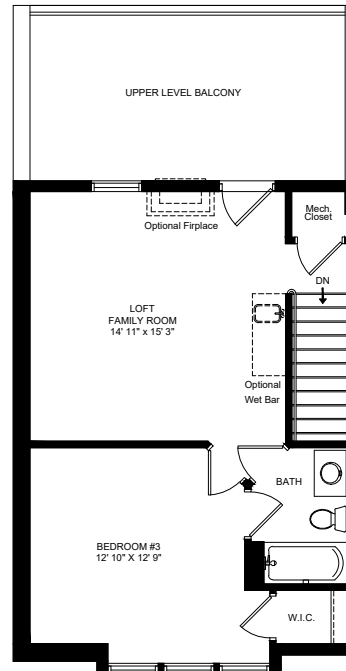
LOWER LEVEL



FIRST FLOOR



SECOND LEVEL



THIRD FLOOR



MAYFAIR
ON MAIN

10340 Main Street • Fairfax, Virginia 22030 • (703) 570-6037 • sales@mayfaironmain.com

mayfairhomesva.com



Disclaimer: While the information covered here and in the accompanying package is believed to be correct, it is issued for the purchaser's guidance only and does not form any part of any legal contract or purchase agreement. For Complete details, please refer to the CIB Approved Public Offering Statement provided to you as a legal requirement of your purchase, including your right to rescission therein provided. Our policy is one of continued updating and improvement and the right is reserved to change included features or general specification without notice. Please see the Community Sales Manager for Details.